

[> Login/Signup](#)

Welcome to Lohmann Research Equipment

Since 1995 LOHMANN RESEARCH EQUIPMENT distributes high quality products for biomedical research in Europe including multielectrode recordings systems, automated screening equipment, or human electrophysiological recording devices used for neuronavigation during neurosurgery.

According to our own long-lasting experience in Neuroscience and Toxicology LRE guarantees competent consultancy, good technical support and fast service and a product selection for quality, reliability and economy.

Multiple Slice System



Acute vital tissue sections like the hippocampal slice preparation have become a valuable tool in neuropharmacology and toxicology for evaluation of drug effects in the pharmaceutical industry.

[more...](#)

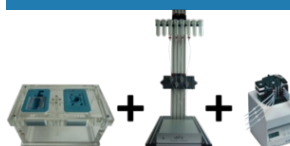
Slice chambers



The new chamber design of LRE-slice chambers allows individual setup of your experiments. Combine different chamber inlets e.g. submerged and interface ...

[more...](#)

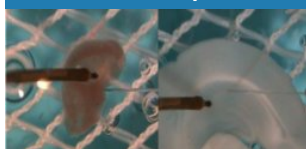
Product bundles



Profit from our attractive product bundles...

[more...](#)

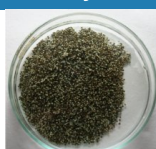
Workshops



Learn more about heart and brain slices. Especially preparation of slices, slice maintenance, recording techniques, etc.

[more...](#)

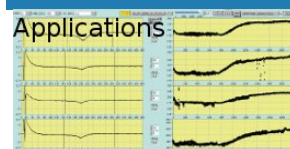
Oocytes



Visit our oocytes delivery service. freshly prepared oocytes from *Xenopus laevis*, injection of *Xenopus* oocytes with cDNA or mRNA, transfection of cell lines, automated TEVC recording, patch clamp recordings...

[more...](#)

Software solutions



Read about our latest applications in: Heart Slice, LTP, epilepsy, Dopamine release in the striatum, Metabolic glutamate receptors...

[more...](#)


Special offer



